

A GREAT JOURNEY IN A SMALL PLACE

The GRATALOUP Museum presents two seasons of exhibitions per year.

IN THE CHAPEL

- An exhibition dedicated to GRATALOUP on a theme specific to the painter's work (spring-summer season).
- An exhibition devoted to a major artist of modern/contemporary art (autumn-winter season).

IN THE GARDEN

The museum invites living artists to exhibit their artwork, (mainly installations/LandArt), related to the theme of the season.

A DIGITAL AND SENSORY EXPERIENCE

The GRATALOUP Museum offers you a true sensory journey through the scenography of its exhibitions.

- To enhance the visitor's understanding of the exhibited works, each one is accompanied by a podcast (french/english), including a version intended for children.
- In the contemplation space, unpublished documentaries about the featured artists immerse the viewer in their artistic process.
- A sound and light show is created specifically for each exhibition. A true highlight of this digital and sensory journey, illuminating the vaults of the priory, it brings the exhibited works on the walls to life.

3 rue de l'église | 78460 Chevreuse
contact@museegrataloup.fr

GRATALOUP
MUSEUM CHEVREUSE
CONTEMPORARY ART CENTER



©Photo Cathy Bertrand

www.museegrataloup.fr/en

GRATALOUP MUSEUM
CONTEMPORARY ART CENTER
CHEVREUSE

THE SAINT-SATURNIN PRIORY

Dating back to the 10th century and located in the heart of the historic center, it is the oldest building in the town of Chevreuse. The vaults of the chapel bear witness to the majesty of Gothic architecture from that period.

The portion occupied by the museum corresponds to the priory chapel. The entire complex, including the chapel and the priory, once formed an abbey comparable in size to that of Vaux-de-Cernay. It extended over the area of the current parking lot in front of the museum. In the garden, remnants of columns that supported the priory can still be observed.

In 2011, the municipality of Chevreuse, with the support of the region and the department, decided to renovate the entire site. The remaining part of the priory in the garden was completely destroyed, except for the central column, and the chapel was restored.

The architect in charge of this project, in collaboration with the mayor of the town of Chevreuse, approached the painter GRATALOUP, an artist skilled in all applied arts, to create three stained glass windows that can be admired in the heart of the chapel.

During that time, GRATALOUP lived between Paris and Chevreuse, where he had built a studio-house in 1989.

In 2020, the town of Chevreuse decided to dedicate the Saint-Saturnin Priory to the GRATALOUP Museum. It was only two years later (due to the Covid period delay) that the museum opened its doors to the public on March 12, 2022.

Regrettably, the painter passed away on January 16, 2022, and did not have the opportunity to witness the inauguration of the place that now bears his name.



Podcast on the history of the priory

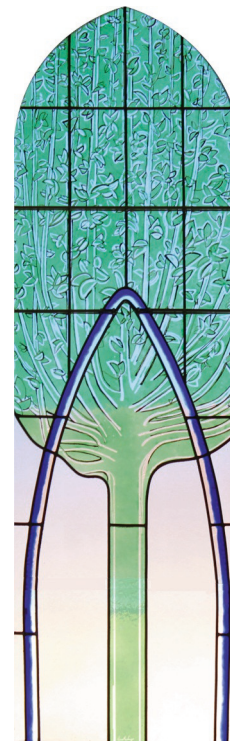
THE STAINED GLASS WINDOWS

Created in 2011 by the painter GRATALOUP, in collaboration with the Ateliers Loire in Chartres, these stained glass windows are truly extraordinary.

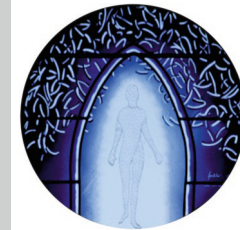
They showcase not only the development of entirely new techniques in the art of stained glass but also their masterful aesthetics.

- The designs are largely liberated from the leading traditionally used to encase stained glass windows.
- The painter employed the collage principle (cut and glued glass directly onto the background of the stained glass) to place elements such as the small character of EVE or HOURGLASS.

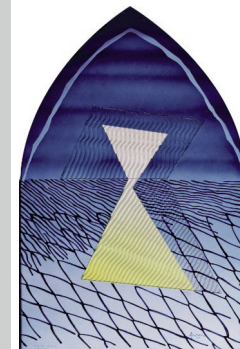
Through these stained glass windows, one can perceive the two levels of interpretation, both visual and symbolic, which are characteristic of the painter's work.



THE APPLE TREE is facing Eve. Without the apple and in its monochromatic greenery, the light that passes through it reveals its foliage, each leaf of which is unique in its immateriality. For the painter, it showcases nature in its infinite multiplicity.



EVE is a symbolic and archetypal representation, akin to a particulate apparition (the small reliefs on the figure — symbolizing the particles that make up living beings — appear or disappear depending on the light or the viewer's position).



THE HOURGLASS is the destiny of the human being, the symbol of time, life, and death, the infinite and impermanence of things.